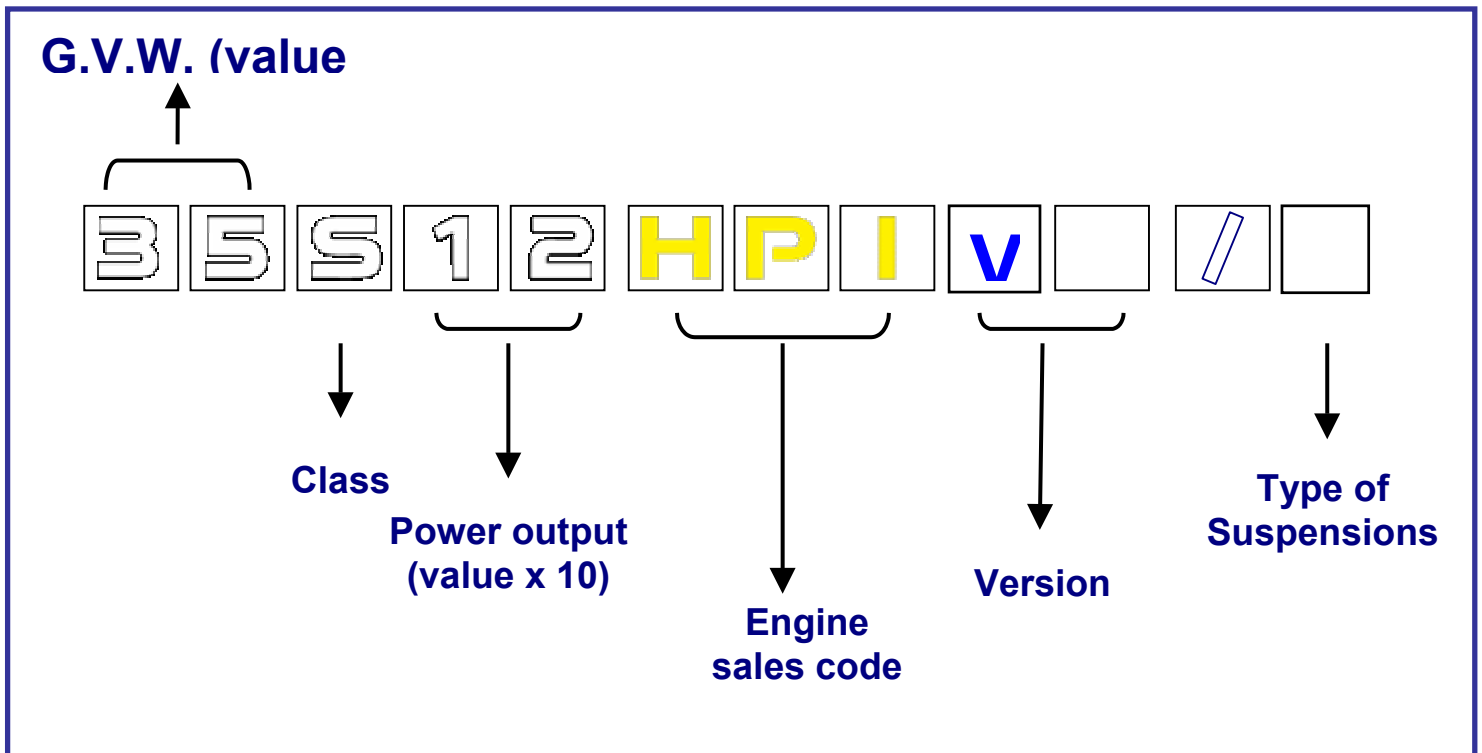


GAMMA LEGGERA



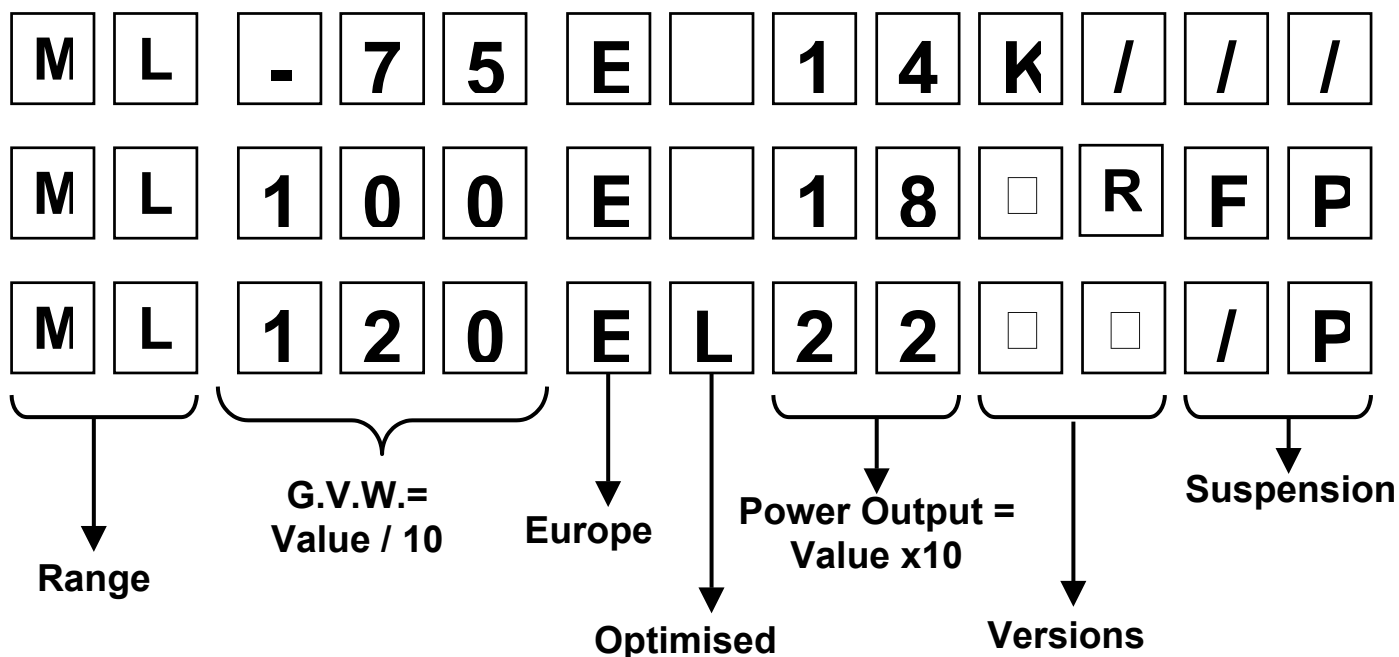
HPI : High **P**ressure **I**njection
HPT : High **P**erformance
 Turbine

- : Rear mechanical
suspensions
P : Rear air suspensions

- : Chassis cabs
D : Crew cabs (6+1)
V : Vans
SV : Semi windowed vans
C : Combi
CC : Chassis cowls

engineman

GAMMA MEDIA



Range: Medium Light
(identifies the Eurocaro Range)

GVW: Gross Vehicle Weight (t)

**ENGINE “commercial”
POWER (HP)**

tector 4: 140 – 160 – 180 – 180

tector 6: 180 – 220 – 250 – 280 – 300

SUSPENSIONS:

--: Mechanical suspension

P: Air suspension at rear

FP: Air suspension front and

VERSIONS:

- : Chassis-cab / solo vehicle

K : Tipper

R : Artic

KR: Tipper / Artic

D: Crew cab

W: 4X4

WR: 4X4 / Artic

R-Sw: Road sweepers

engineman

GAMMA STRALIS

AD 260 S 42

Cab type		
AD	Active Day	Day cab
AT	Active Time	Sleeper cab
AS	Active Space	Sleeper cab, large version
Gross Vehicle or Combination Weight (examples)		
190	19 tons	Truck with 2 axles
260	26 tons	Truck with 3 axles
440	44 tons	Tractor with 2 or 3 axles
Range		
S	Stralis	Heavy On Road
Engine power (example)		
42	420 HP	

AD 260 S 42 Y...

Models with three axles		
Y	Third axle behind driven axle	Third axle is not driven
X	Third axle in front of driven axle	Third axle is not driven
Z	Two driven rear axles	6x4, tandem axle
TY	Tractor, version Y	6x2, towed 3 rd axle
TX	Tractor, version X	6x2, pushed 3 rd axle
TZ	Tractor, version Z	6x4, tandem axle

engineman

AD 260 S 42 Y/P

Air suspension		
P	Pneumatic	Only rear axle(s)
FP	Fully Pneumatic	Front and rear axles
PS	Pneumatic Steered	Third axle steered
FS	Fully pneumatic Steered	Third axle steered

AD 260 S 42 Y/P-D

Version	
D	Distribution
CM	Casse Mobili = containers
CT	Car Transport
TN	Twin wheels on third axle, with mechanical suspension
PT	Twin wheels on third axle, with air suspension
GV	Grande Volumi = grand volume
HR	Hub Reduction
RR	Rough Roads
LT	Low Tractor
HM	Heavy Mission

engineman