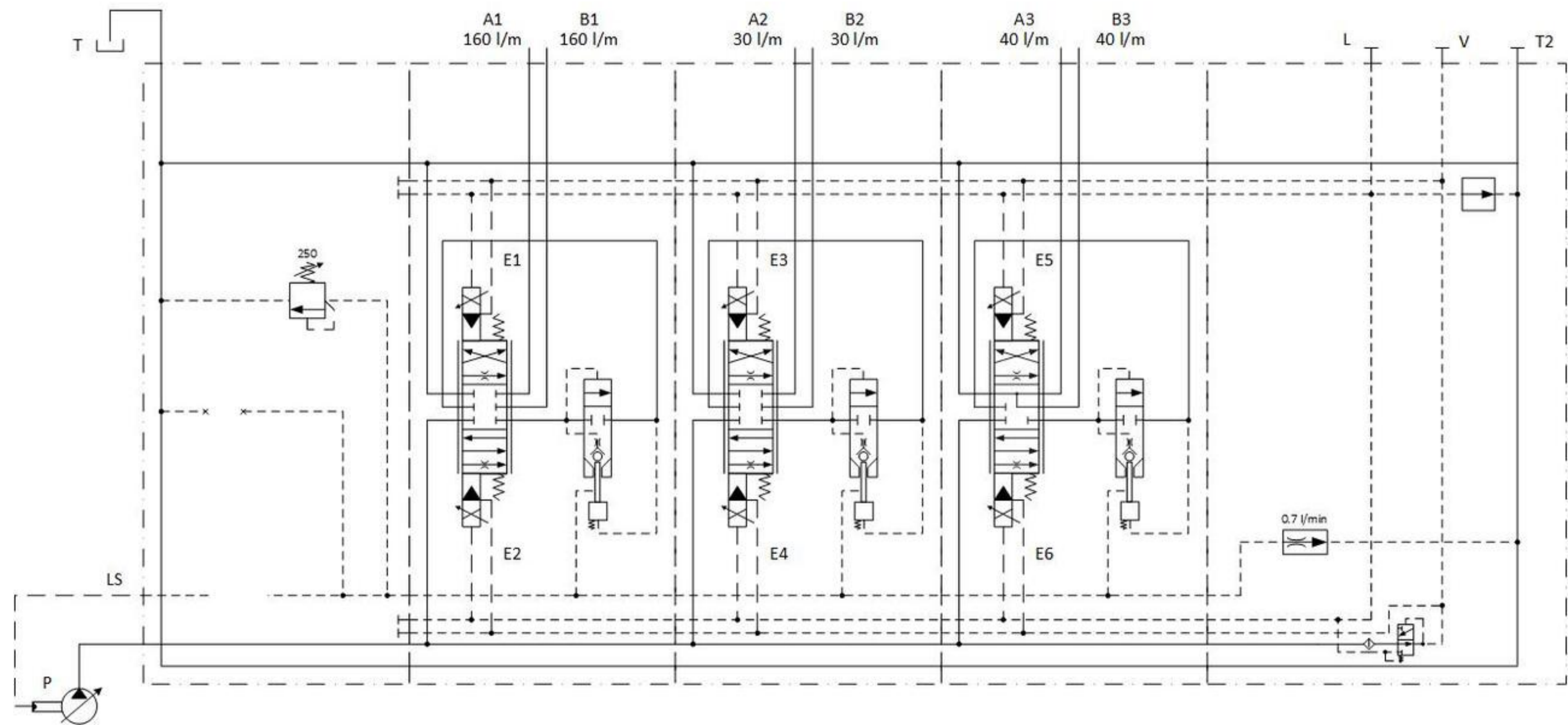


WORKING CONDITIONS	DPX160
Max. work port flow	160 l/min
Max. inlet flow	230 l/min
Max. pressure P	300 bar
Max. pressure A,B	300 bar
Max. backpressure	30 bar
Stand-by pressure	14 bar
Fluid	Mineral based oil
Viscosity range	12 to 400 mm ² /s
Seal material	NBR
Temperature range of the fluid	-20°C a +100°C
Enviromental temperature	-20°C a +50°C
Max. rate of contamination of the fluid	18/15 ISO-4406
Internal leakage	12 cm ³ /min
ELECTRICAL FEATURES	
Nominal voltage	24 VDC ±10 %
Nominal current	0.75 A
Electrical resistance	20.8 Ohm ±5 %



PORTS DIMENSIONS:

PORT	SIZE
P	BSP3/4
T	BSP1
VL	BSP1/4
AB	BSP3/4

